



# DISCOVER PAHRUMP



Business opportunity & quality of life... the dawning of a new era in Nevada.



# a valley of opportunities

## WELCOME FROM THE TOWN MANAGER

The first settlers of Pahrump, Nevada, were drawn to our beautiful desert valley for opportunities envisioned by its abundance of land and water.

Now there is new generation of pioneers and they come for access to land and water but also for the expanding possibilities. I am one of those latter arrivals to Pahrump and as town manager, every day I hear from others like me.

Neighbors tell of how they came to this quiet, rural-paced town to be on the ground floor of one of the fastest-growing communities in the nation. Friends say they are here for the more than 200 days of clear and sunny weather and to wake up to the sun rising over a snow-covered Mt. Charleston.

More and more of the people I talk with are business executives who are starting enterprises or relocating companies or warehouses to Pahrump.

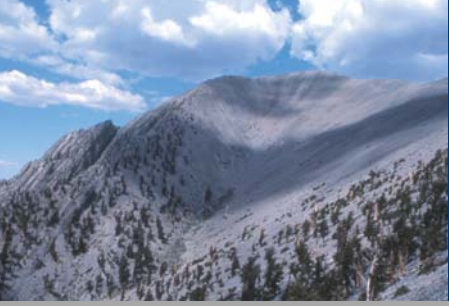
The savvy managers list lower costs of labor, cheaper transportation and the freedom from burdensome taxes and regulations of other areas. These corporate associates say it's an obvious choice. And if asked for proof, they'll point to recent issues of *Forbes, Inc.* or *Money* magazines which have all reported Nevada's overall business climate as the best in the nation.



On the pages that follow you'll meet the people of Pahrump, both new and long time residents, and see how everything needed is here or under construction. You'll find supporting facts and figures to serve as a resource to both businesses and individuals. You can contact me at: (775) 727-5107, ext. 9. Or, visit our official website at: [www.pahrumpnv.org](http://www.pahrumpnv.org).

***Pahrump is for the pioneering spirit in all of us.  
We hope you discover us soon.***

*— Dave Richards*



# table of contents

Nye County Economic Development is here to provide you with a customized tour, schedule meetings with business and community leaders and government officials and provide research and information specifically compiled for your business. We will assist you with schools for your families and training programs for your employees, utilities, financial institutions and regulatory agencies, and identify incentives that may be available for your business. It is our goal to make your visit to Pahrump and Nye County as productive as possible.

We understand the importance of business location and relocation decisions and will hold all information in strict confidence.

For more information about relocating your business to Nye County, contact our Economic Development Director, Ann Barron at (775) 751-7075 or send her an e-mail at [nyeeconomicdevelopment@cox.net](mailto:nyeeconomicdevelopment@cox.net).



*Ann Barron,  
Economic  
Development  
Director for  
Nye County,  
Nevada.*

## **Introduction**

Welcome From The Town Manager . . . . . 2  
Economic Development Director for  
Nye County, Nevada . . . . . 3

## **Community Affairs**

Pahrump Regional Planning District Master Plan Map . . . . . 4  
Pahrump At A Glance . . . . . 5  
Housing . . . . . 6-7  
Education . . . . . 8-9  
Healthcare . . . . . 10-11  
Fire & Rescue Services . . . . . 12  
Emergency Police Department Services . . . . . 13  
Churches . . . . . 14  
Community Connections . . . . . 15

## **Demographics**

Cost of Living . . . . . 16  
Demographics Overview . . . . . 17

## **Business**

Economic Development . . . . . 18-19  
Pahrump Business Opportunities . . . . . 20  
News and Entertainment . . . . . 21  
Nevada Taxes . . . . . 22  
Labor Costs . . . . . 23  
Employment . . . . . 24-25  
Business Programs . . . . . 26-27

## **Quality of Life**

Town Events . . . . . 28, 29  
Recreation & Tourism . . . . . 30, 31

Many individuals helped in developing this "Discover Pahrump" brochure and we wish to thank them all. The following are a few of those deserving additional recognition for their support: Dave Richards and the entire Town staff; Kari Frilot, Pahrump Chamber of Commerce; Ann Barone, Economic Development Director for Nye County; and Paula Elefante, EDEN, Economic Development Authority for Esmeralda and Nye County.

Photography courtesy of: Denise Fortin/D2-Design; Sergio Salgado/CCSN; Marshall Arts and John Holtz/Pahrump Fire Department.





## PAHRUMP AT A GLANCE

**P**ahrump sits amid stunning vistas of a vast desert valley, 26 miles long and 8 to 10 miles wide, and is surrounded by BLM and Forest Service land. To the east are the Spring Mountains and Mt. Charleston, with its snow-covered summit of 11,000 feet, blocking the lights of Las Vegas, just over an hour’s drive away. West are the Nopah Mountains and a mere 10 miles to the eastern California border.

The name *Pahrump* has been said to be from Native American origins and to connote “water-stone” in reference to its abundance of water due to an enormous underground water basin.

More than 30,000 call Pahrump home and they get more neighbors every day. Pahrump is a rapidly growing rural/suburban community with a population that has nearly doubled during each of the last two decades. Governed by a town council with an appointed professional town manager, Pahrump is the largest town in the largest county of the state, Nye.

The weather is clear and sunny on an average of 216 days a year. As typical of the high desert, the summers often reach into the 100s but the lowest relative humidity in the country can make the temperature seem cooler. Due to the elevation, nights cool down. Winter nights can occasionally drop below freezing for short periods.

Pahrump has no personal income tax, no corporate income tax, no estate/inheritance tax, no franchise tax, no inventory tax, no interstate commerce tax and no sales tax on services.

Property, other sales and business taxes are on the low end. In 2004-2005 fiscal year, if your land and home had a total appraised value of \$100,000, your annual property tax would be approximately \$1,175. Sales tax of 6.75 percent applies to all products, except food items and service. There is an annual small business tax of \$100.



### GOVERNMENT

	<b>BOULDER CITY</b>	<b>HENDERSON</b>	<b>LAS VEGAS</b>	<b>LAUGHLIN</b>	<b>PAHRUMP</b>
Size (sq. miles)	200	96.03	130	80	<b>400</b>
Average Elevation	2,400	1,940	2,162	510	<b>2,695</b>
Pop. Density (per sq. mile)	74.83	2,264	4118	101	<b>83</b>
Population	15,342	234,320	559,824	8,100	<b>33,000</b>
Government Type	Council/Manager	Council/Manager	Council/Manager	Township of Clark Co.	<b>Town Brd/Town Mgr.</b>
Property Tax 2004/05	0.2038	0.7108	0.6765	0.8416	<b>.2298</b>
Planning Commission	Y	Y	-	Y	<b>Y</b>
Industrial Plan Approval	Y	Y	Y	Y	<b>Y</b>
Zoning Regulations	Y	Y	Y	Y	<b>Y</b>



## HOME SWEET HOME IN PAHRUMP

Of the more than 11,000 homes in Pahrump, more than forty percent are single family detached homes, many of them on acre-sized lots, giving the town a distinctive rural atmosphere.

In Pahrump, the average selling price of a site built home is \$144,566 according to the 2003 reports.

New master planned communities are being built in and around Pahrump including the 480 acre master planned neighborhood of Artesia at Hafen Ranch (see also story on Land Of Opportunity).

One of the largest master planned projects is the 900-acre Mountain Falls golf community, which could ultimately include as many as 3,200 homes. Homes at the Mountain Falls, being developed by one of the top master planned community builders, William Lyon Homes, Inc. range in price from \$178,000 to \$325,000.



Other Pahrump master planned communities are Pleasant Valley by Concordia Pleasant Valley LLC with more than 800 homes and Tesora by Beazer Homes Holding Corp., with more than 500 homes. It has been reported that Focus Property Group also is moving ahead with plans for a development on about 2,000 acres.

Nevada is currently the 35th most populace state and has seen a growth rate of more than 65 percent in recent years, marking it as the fastest growing state in the nation with Arizona at 40 percent a distance second. Between the 1990s and early 2000s, the population of Pahrump rose by more than 25,000 people, representing an increase of more than 300 percent. Projections are for the town to be home for 150,000 residents by 2050 according to the Pahrump Regional Planning District Master Plan Update 11.19.03.

*“In keeping with its “Old West” setting and country estates, many of the homes in Pahrump showcase horses and other domestic livestock on their property.”*



## A LAND OF OPPORTUNITY

For Tim Hafen and his family, Pahrump is truly a land of opportunity. First more than fifty years ago and now again today.



Hafen arrived in the area in 1951. "It was for the opportunity to acquire and develop a large tract of land," explained Hafen. Like many of the other area ranches, he grew alfalfa, cotton, wheat and maintained a cattle pasture taking full advantage of the land, sunny weather and available water. "And we ranched until a year or so ago," he continued.



Today, Hafen is again leading the way with the next new development of Pahrump. And once again it centers on the opportunity to develop land.

The family's original site is now part of "Artesia at Hafen Ranch," a 480-acre prestigious master planned community where Hafen still calls home. The property features large lots with parks and walking trails

maintaining much of what Pahrump has always offered.

And to provide key services to Artesia, Hafen also formed the Pahrump Utility Company, one of the four privately-owned water and sewer companies in the area. Additionally, he is president of Tim Hafen Ranches Inc.

Over the years, Hafen and his family have lived, worked and contributed to the community. And it's probably an understatement to say he has seen the town change. It wasn't until 1963 that the town was wired for electricity. And in 1965, the first telephone lines were made available.

The main highway, Route 160, wouldn't be built until three years after Hafen came to Pahrump and it would be the first link to another

small but growing community, Las Vegas. Many years later, Hafen, a former Assemblyman, would be actively involved in many of Pahrump's improvements, such as the widening of state Route 160.

Pahrump grew but differ-



ent from other small towns, described Hafen. Pahrump spread out rather than developed around a center main area. As a result according to Hafen, Pahrump will always offer two kinds of lifestyles.

There will be the more rural way of life on the thousands of acre-and-a-quarter home sites scattered throughout the valley. And there are now the new more planned home developments such as Artesia which are designed to offer neighborhoods for the next generation of Pahrumpians.

For Hafen and others, then and now, Pahrump can be called the land of opportunity.





*“In keeping with our mission statement ‘Every Child a Success!’ we encourage parents, businesses, and senior citizens to volunteer in our schools and share their skills to help educate our future generation.”*

— Dr. William E. Roberts, Superintendent of Nye County

Growing as fast as Pahrump itself, are the community’s schools and educational facilities. In the past few years, an elementary school, a middle school and a new technical center of the Community College of Southern Nevada have opened their doors. Another new elementary school is in the planning stage.

Dr. William E. “Rob” Roberts, Lieutenant Colonel, U.S. Army (Retired) is Superintendent of Nye County School District, which includes Pahrump and in total encompasses 18,400 square miles, marking it as the largest geographical school district in the contiguous U.S. The district was selected by the American School Journal for the 2005 Magna Award. Superintendent of the year for 2004 by the Nevada School Board Association, Dr. Roberts is a decorated combat helicopter pilot and former assistant professor of military science at West Point.

Every school completes a School Improvement Plan to address what changes are needed to enhance student achievement. The entire school district is also in the process of implementing Professional Learning Communities to help schools address what needs to be done to assure all students learn.



Photo: Courtesy of Denise Fortin/D2-Design

### PAHRUMP PUBLIC SCHOOLS

School Enrollment	Size	Grades	Team
Manse Elementary:	483	K-5	Hawks
J.G. Johnson Elementary School:	554	K-5	Mustangs
Hafen Elementary School:	557	K-5	Scorpions
Mt. Charleston Elementary School:	572	K-5	Cougars
Rosemary Clarke Middle School:	1,136	6-8	Sharks
Pahrump Valley High School:	1,139	9-12	Trojans
Pathways Distance Education School:	142	6-12	
Community College of Southern Nevada:	1,000		Coyotes

### PRIVATE SCHOOLS

Community Christian Academy	K-8
New Hope Christian Academy	Serving K-12

## Non-traditional Educational Programs

### Pro-Start - Culinary Arts Program

In this nationally certificated two-year program, students learn all facets of culinary arts including cooking, baking, decoration, menu and meal planning, presentation and serving, and the “fiscal” side of culinary management. Successful completion of the program and its standardized examinations yields a certificate which aids in obtaining an entry level position and/or gives the students credits toward a culinary degree in a large number of institutions including Johnson and Wales, Cordon Bleu and others

### Certified Nursing Assistant Program:

High school students can elect a program to become a certified nursing assistant. Primarily dealing with patient care, CNAs are used at long term facilities as well as hospitals. Pahrump will be graduating the first class of CNA students in 2005.

### CAD

Computer Assisted Drafting takes students to the next progression from “drafting tables” still used by draftsmen and architects. CAD is a two-year program and can lead to high wage positions in fields that normally have significant job openings.

### JROTC

High school students gain knowledge of the value of citizenship, leadership, service to the community, personal responsibility and a sense of accomplishment. The program helps instill in students self-esteem, teamwork, and self-discipline. Its mission statement is “To motivate young people to be better citizens.”

### Interactive Video Classes

Interactive video classes in biology, business, English and world language are presented along with dual credit classes. A partnership with Community College of Southern Nevada allows students to attend college level courses that also give high school credit. The use of interactive video equipment to televise core classes was initiated by the school district to provide an equitable curriculum at all its educational sites which extend out in remote areas and cover over 18,400 square miles of the county.

### Pathways

An alternative school, Pathways offers middle school and high school curriculums using an independent study program coupled with distance education. Courses are provided using book curriculum or computer and Internet programs. Students may work at an accelerated pace allowing for credit recovery and/or early graduation.



## HIGHER EDUCATION



### Community College of Southern Nevada - Pahrump Valley Center

An extension of the Community College of Southern Nevada (CCSN), this \$5-million, 32,000 square-foot high tech campus offers a broad catalog of general education and specialized courses from business management to environmental science and from building inspection to legal assistant.



High tech is taught through its CISCO Networking Academy and electronics engineering curriculum. Students also can take advantage of a Certified Nursing Assistant skills lab, a 72-



station interactive learning center, computerized language lab and video conferencing classroom. Additionally, the campus

is a part of a national ACT center network delivering more than 1500 high quality on-line courses.

An important resource for the community and businesses, the Pahrump Valley Center offers the ability to work with companies and provide customized or specialized training. "We can address the requirements of a business for

employees to upgrade their professional development or to learn a particular set of skills," outlined Kelcy Thompson, site administrator since 2002. "We can respond very quickly to growing or changing needs of businesses," she added, "and offer the option of training with required continuing education credit or not." "We also collaborate with the community's high school and are currently planning or offering technical classes in automotive, CAD, culinary, nursing and welding for dual credit," she concluded.



One of the center's educators is Ronald Wayne, credited as the "third founder" of Apple Computer and who has been granted ten U.S. patents. The teacher roster also includes professors who hold degrees from such prestigious institutions as University of Chicago, Loyola University Law School and the Technical University of Berlin (Germany). Recently, the center worked in partnership with the Nevada State College to offer courses at its Pahrump facilities and enable students to earn and saw graduates receive an undergraduate degree in criminal justice.



Photos: Courtesy of Sergio Salgado/CCSN



## TO YOUR HEALTH

A healthy lifestyle is made easier in a town that offers plenty of clean air, great weather almost year-round and just-out-the-backdoor-access to the great outdoors.

In Pahrump, town parks feature a rodeo arena in addition to baseball fields. Fitness centers and golf courses abound.

All the same, for those accidents, emergencies and vital medical needs, there's a new hospital with state-of-the-art healthcare facilities being completed in the center of town. To also serve the medical needs of Pahrump, there are key medical clinics and offices that provide a complete range of physician, dental and chiropractic services.



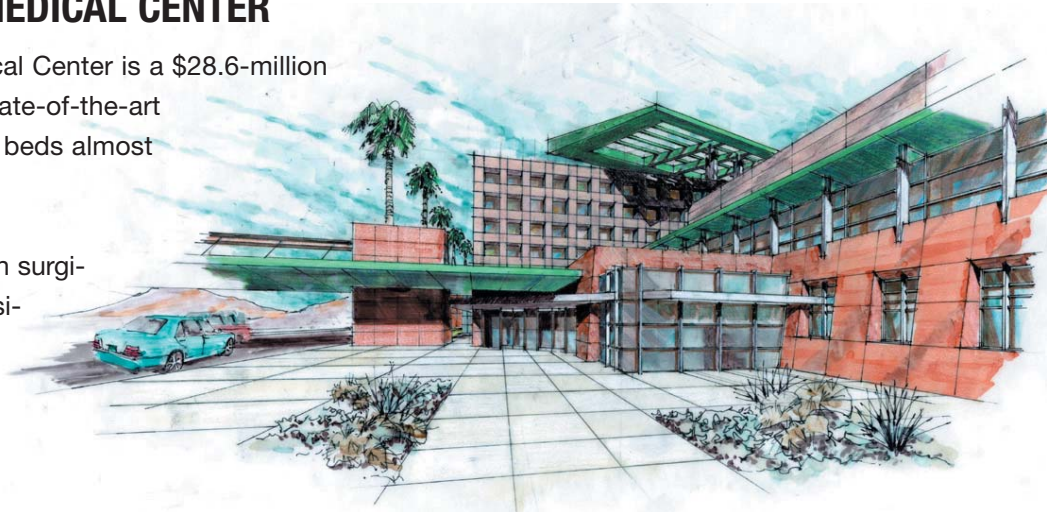
Photos: Courtesy of Denise Fortin/D2-Design



## DESERT VIEW REGIONAL MEDICAL CENTER

The new Desert View Regional Medical Center is a \$28.6-million dollar, 71,000-square-foot, 25-bed state-of-the-art hospital - with room to expand to 50 beds almost immediately.

A 24-hour emergency room, high-tech surgical facilities, diagnostic imaging, physical therapy, LDRP maternity birthing suites and other advanced medical components will await those needing medical care.



“The hospital is set to offer the latest in diagnostic services and treatment,” explained Roy Barraclough of the Rural Health Management Corporation (RHMC), builder and operator of the new facility. Scheduled to open January 2006, this is the latest project and its first in Nevada for RHMC, a 15-year old organization which has community care hospitals and medical centers in Utah and Colorado.

To diagnose a variety of conditions, the new hospital puts forward advanced CT scanning, radiology, ultrasound, fluoroscopy, mammography and MRI testing. “Our advanced CT scanner allows physicians to diagnose various maladies and injuries, often eliminating the need for more invasive procedures,” detailed Barraclough, project director for the new facility.

For the newest town arrivals, the hospital offers the latest in baby birthing services including “LDRPs,” a single suite for Labor, Delivery, Recovery and Post Partum that blends traditional obstetrics within a comfortable more home-like environment.

New physicians, particularly in specialties not currently practicing in town, will add to the staff of the town’s resident doctors and other medical staff utilizing the new facility. When fully operational, the hospital will have a dedicated team of more than 200 medical professional and support personnel administering to the needs of the town.

Specialized healthcare is available in nearby Las Vegas at its more than 30 hospitals. This includes the state’s only burn care facility, the Lions Burn Care Center at University Medical Center.

“All of us involved with the new Desert View Medical Center feel privileged for this opportunity to contribute to the community’s quality of life and for being a key part in developing Pahrump to its fullest potential,” stated Roy Barraclough.

*“The hospital is the culmination of a dream that first emerged decades ago. We sincerely appreciate the ground-breaking efforts of the community’s early visionaries and the growing support of the citizens of Pahrump during the course of the project.”*

— Roy Barraclough of the Rural Health Management Corporation

## SPECIALTY HOSPITALS

FACILITY	Specialty	Beds	Sq. Ft.
<b>HealthSouth Hospital at Tenaya</b> 2500 N. Tenaya, Las Vegas 702-562-2021	Long-term Acute Care	70	45,800
<b>HealthSouth Rehabilitation Hospital of Henderson</b> 10301 Jeffery's St., Henderson 702-939-9400	Stroke Spinal Cord Brain Injury	60	45,000
<b>HealthSouth Rehabilitation Hospital of Las Vegas</b> 1250 S. Valley View Blvd., Las Vegas 702-877-8898	Brain Injury Stroke Program	Pulmonary Program Amputee Program	79 67,000
<b>Kindred Hospital</b> 5110 W. Sahara Ave. Las Vegas, 702-871-1418	Long-Term Acute Care Ventilator Weaning Low-Level Rehab	52	57,289
<b>Kindred Hospital</b> 2250 E. Flamingo Rd. Las Vegas, 702-784-4300	Long-Term Acute Care Ventilator Weaning Low-Level Rehab	92	118,000
<b>Montevista Hospital</b> 5900 W. Rochelle Las Vegas, 702-364-1111	Comprehensive Psychiatric and Addiction Treatment	Outpatient Services at 6000 W. Rochelle	80 47,872



## PAHRUMP VALLEY FIRE/RESCUE SERVICES

Following the footsteps of his father, Fire Chief Scott F. Lewis has been in the fire service since 1980 and served as a Chief Officer from 1992. Originally from Pennsylvania then New Jersey, he was recruited to help restructure Pahrump’s fire and EMS team.

Chief Lewis embraces the philosophy, “There’s always a way to do something better..find it.”

Lewis directs a team of 27 career Firefighters/Paramedics, Firefighter/EMTs and support staff. Typical of those who live and work in Pahrump, most staff are transplants from across the continental US including Alaska.

The response area covers 400 square miles and an additional 200 square miles of automatic mutual aid.

Pahrump Valley Fire-Rescue Service has responsibility for all fire suppression, rescue, life/safety inspections, EMS and hazardous material incidents that occur in Pahrump. Our goal is to provide the best life/safety customer service possible.



Due to the vast geographic service area (including surrounding mountains) and no immediate access to a hospital, Pahrump utilizes Mercy Air (Pahrump based helicopter service) to minimize the time required to transport critically injured or ill patients to Las Vegas hospi-



tals. Mercy Air 21 averages 400 Pahrump patient flights annually. Mercy Air 21 further serves California, Utah and Arizona. Most patients can be transported to Las Vegas by flight in just over 20 minutes.

Pahrump Valley Fire-Rescue Service offers community programs including:

- EMT Courses
- Firefighting Courses
- CPR Certification
- AED (Automatic Electronic Defibrillator) distribution programs
- Community Event Support and Protection
- Fire Prevention Educational Programs aimed at school aged children.
- Numerous Fire Prevention Initiatives.
- Authorized controlled burns management.



*“Our fire department is taking great strides in keeping up with the growth in the area.”*

— Fire Chief Scott F. Lewis

# emergency services

## EMERGENCY POLICE DEPARTMENT SERVICES



The Nye County Sheriff's Office has responsibility for all community policing in Pahrump. The office strives to establish and maintain a relationship with the community in order to ensure needs are met as it relates to law enforcement and crime prevention.



Anthony "Tony" L. DeMeo was elected Sheriff in 2002, and currently heads a department of 147 sworn and non-

sworn employees. Sheriff Tony DeMeo is a 31-year police veteran whose family tradition in law enforcement dates back to the early 1900's.

The Sheriff's Office maintains its own website [www.nyesherriff.net](http://www.nyesherriff.net) which includes not only information about the office but Online Reports as well as a web based newspaper.

### Special Services include:

Special Tactics and Rescue Team, K-9 Unit, School Resource Officer, Street Crime Unit, Crime Analysis, Narcotics and Criminal Investigation Units.

### Volunteers provide assistance in the Sheriff's Auxiliary Unit or Search and Rescue:

The Sheriff's Auxiliary Unit is organized to prevent crime by mere presence, or identify public hazards. Members also act as the eyes and ears of the Sheriff's Office by identifying suspicious activities, crimes in progress, or dangerous circumstances.

The Search and Rescue unit is comprised of 25 volunteers, who specialize in locating lost persons, and extricating them from hazardous situations. These volunteers receive training

in search techniques, first-aid and advanced medical training, as well as extrication, and high angle rescue. The unit has a high rate of mission success.

### Neighborhood Watch Groups: 7

**Vehicles:** 53 Police and 10 support vehicles, including special vehicle or state-of-the-art equipment Hostage Rescue Vehicle, Crime Scene Van, Prison Transport Vehicle and Mobile Substation.

**Police Protection Rating:** A recent poll conducted by Community College of Southern Nevada revealed that the Sheriff's Office received a 98.4% approval rating.



*"I am truly fortunate to be able to work with a community and agency that is working together to address the challenges of growth."*

— Anthony L. DeMeo, Sheriff



## PAHRUMP CHURCHES (Area Code 775)

Calvary Chapel Pahrump Valley  
751-8000

Oasis Outreach  
727-7227

So. Valley Southern Baptist Church  
751-1213

Central Church of Christ  
751-5763

Our Lady of The Valley Catholic Church  
727-4044

Trinity Assembly of God  
727-4514

Choice Hills Baptist Church  
751-1417

Pahrump Church of Christ  
727-9218

Victory Christian Center  
751-0777

Church of Jesus Christ of Latter Day Saints  
727-5229; 727-5342

Pahrump Community Church  
727-5384

Water from the Rock Christian Fellowship  
751-8449

Church of the Harvest  
751-2011

Pahrump Seventh Day Adventist Church  
727-6655

West Valley Baptist Church  
751-1866

Church of Pentecost  
727-6681

Pahrump Valley United Methodist Church  
727-6767

Church on a Mission  
727-4151

St. Martin's -In-The-Desert Episcopal  
Church 537-1115

First Southern Baptist Church  
727-6038

Saved By Grace Lutheran Church (ELCA)  
727-2360

Grace Christian Fellowship - Truth & Grace  
Ministries  
727-6431

Science of Mind Gathering  
727-8633

Jehovah's Witness Kingdom Hall  
727-6077; 727-1899

Second Missionary Baptist Church of  
Pahrump 537-1587

Living Waters Bible Church  
727-7220

Shadow Mountain Christian Fellowship  
751-7623

New Hope Fellowship  
751-1867

Shepherd of the Valley Lutheran Church  
(Missouri Synod) 727-4441  
727-4098

### A rendering of the new Our Lady of the Valley Catholic Church

Rendering courtesy of  
Indigo Architecture, Las Vegas.



# community connections

## COMMUNITY CONTACT LIST (Area Code 775)

### CLUBS & ORGANIZATIONS

- 4-H Club of Pahrump ..... 727-5532  
American Legion, Post 22 ..... 751-2410  
American Legion, Ladies Auxiliary .. 727-6906  
Beta Sigma Phi ..... 751-2985  
Boy Scouts, #808, Moose Lodge  
..... 702-968-8130  
Computer User Group ..... 727-1246  
Fraternal Order of Eagles ..... 751-2350  
Humane Society ..... 727-8609  
Kiwanis Club of Pahrump Valley ... 727-7191  
Knights of Columbus ..... 751-3248  
Little League ..... 751-3881  
Loyal Order of Moose, Lodge #808  
..... 727-6465  
National Association of Retired Federal  
Employees (NARFE) ..... 727-1193  
Nevada Silver Tappers ..... 727-7011  
Nevada State Horsemen's Association  
..... 727-9198  
Nile Ladies of the Valley ..... 727-5481  
Pahrump Arts Council (PAC) ..... 764-1538  
Pahrump Association of Home Schoolers  
(PAHS) ..... 727-7471; 727-1934  
Pahrump Elks Lodge ..... 751-2796  
Pahrump Gardeners Club ..... 727-6765  
Pahrump Gospel Warriors ..... 727-5517  
Pahrump Masonic Lodge ..... 727-8626  
Pahrump Nevada Genealogical Society (PNGS)  
..... 727-9297  
Pahrump Sr. Citizen's Ctr. .... 727-5008  
Pahrump Valley Amateur Repeater Association  
727-4427  
Pahrump Valley Chamber of Commerce  
..... 727-5800  
Pahrump Valley Junior Golf Association  
..... 727-6670  
Pahrump Valley Kennel Club ..... 537-6355  
Pahrump Valley Lions Club ..... 727-9016  
Pahrump Valley Museum & Historical Society  
..... 751-1970  
Pahrump Republican Women .... 727-1404  
Pahrump Valley Rock Hounds ... 751-8424  
Quilts-4-Cancer ..... 751-5356  
Retired Public Employees of Nevada  
(Carson City) ..... 775-882-7632  
Rotary Club of Pahrump ..... 727-4285  
Royal Rangers & Missionettes ... 727-4514  
Soccer (AYSO) ..... 751-3090  
Take Off Pounds Sensibly (TOPS) Area  
Captain ..... 727-9265  
Toastmaster's Club of Pahrump ... 751-1480  
Trick Trucks of Pahrump ..... 727-0155  
Valley Cruisers ..... 751-8912  
VFW, Post #10054 ..... 727-6072  
VFW, Ladies Auxiliary, Post #10054 727-6072  
Weepah Shrine Club ..... 727-1720
- ### HUMAN SERVICES
- American Cancer Society 702-798-6877  
Bereavement Support Group 727-6452  
Better Breathers Club 751-8125  
Child and Family Services 727-8497  
Diabetic Support Group 727-5008  
Disabled American Veterans Chapter 15  
..... 727-8535  
Disabled American Vets - Van Service  
..... 751-0774  
Domestic Violence Shelter  
(No To Abuse) ..... 751-1118  
EDEN (Economic Development for Esmeralda  
& Nye Counties) ..... 751-1947  
Family to Family Connection .... 751-5898  
Federal Emergency Management Agency  
(FEMA) ..... 800-525-0321  
First Step Club (12 step programs)  
..... 727-9367  
Helping Hands of Pahrump ..... 764-1191  
High Desert Youth Development Foundation  
..... 727-8113  
Home Health Services of Nevada .. 727-5060  
Las Vegas Cancer Center ..... 751-9600  
Mammovan of Nevada ..... 877-581-6266  
Mental Health Clinic of Pahrump ... 751-7406  
Nathan Adelson Hospice ..... 751-6700  
National HIV & AIDS Information  
Service, 24-hour ..... 800-342-2437  
National Veteran's Foundation 800-366-8823  
Nevada AIDS Hotline ..... 800-842-AIDS  
Nevada Business Services ..... 727-4388  
Nevada Rural AIDS Project ..... 751-6768  
Nevada State Employment Security  
Electronic Quick Claim ..... 888-890-8211  
No to Abuse Family Crisis Ctr. .... 751-1118  
24-Hour Hotline ..... 888-882-2873  
Nye County Animal Control ..... 751-7020  
Nye County Health & Human Services  
..... 751-7095  
Pahrump Family Resource Center  
(A program of No To Abuse) ..... 727-3885  
Pahrump Senior Center ..... 727-5008  
Pahrump Valley Fire & Rescue ... 727-5658  
Progressive Choices ..... 751-5221  
Public Health Nurse ..... 751-7070  
Salvation Army ..... 727-6111  
SAFE Club for Children ..... 751-6825  
SAP (Service Assistance Prgm) ... 751-7095  
Senior Companions ..... 727-5008  
Senior Transportation ..... 727-5008  
Social Security Answers .... 800-772-1213  
State of Nevada Welfare Division .. 751-7400  
United Way of Pioneer Territory ... 751-2400  
Water Rock Rescue, Inc. .... 727-1279  
WIC (Sunrise WIC Supplemental Nutrition  
Program) ..... 727-4884

Phone numbers subject to change without notice.



## COST OF LIVING

As of May 2005, the population of Pahrump was reported at 32,800 and growing, continuing the town on a pace as one of the fastest developing communities in the country. The large number of retirees who have relocated to town offer a wealth of experience and expertise as an available business source. In all, the steady growth and labor force availability represents not only economic opportunity for local investors but for expanding industry looking for a ready labor force.

### PAHRUMP AVERAGE MONTHLY RESIDENTIAL UTILITY COST\*

Electric Power	\$125.30
Sewer	\$21.00
Solid Waste Disposal	\$11.33
Telephone	\$17.27
Water	\$16.00

In all, the steady growth and labor force availability represents not only economic opportunity for local investors but for expanding industry looking for a ready labor force.



Photo: Courtesy of Sergio Salgado/CCSN

## Cost of Living Index

	Composit Index	Groceries	Housing	Utilities	Transportation	Health Care	Misc. Goods and Services
<b>Las Vegas NV</b>	<b>105.6</b>	<b>110.0</b>	<b>97.8</b>	<b>100.7</b>	<b>109.3</b>	<b>132.2</b>	<b>107.8</b>
Los Angeles CA	147.4	119.1	223.3	141.0	117.0	111.6	108.3
San Diego CA	138.0	121.6	203.2	87.8	124.0	125.7	108.6
Albuquerque NM	106.3	101.6	111.6	113.2	105.2	109.5	101.6
Denver CO	105.2	113.0	109.0	94.9	103.3	118.8	100.6
Phoenix AZ	97.2	102.0	86.1	91.1	107.1	111.4	102.0



\*The data source (ACCRA) has no data specifically on the town of Pahrump. However, Utilities, Housing and most Goods and Services have a lower index than Las Vegas.



## DEMOGRAPHICS OVERVIEW

Population Demographics: 80 percent of the total population of Nye County is in Pahrump

### Age (2000)

0-17	25.4%
18-34	19.1%
35-44	14.8%
45-54	15%
55-64	11.8%
65-74	8.5%
75 and over	5.5%
Median Age	45.1
Male	50.6%
Female	49.4%

Source: NSBDC.org/Demographer

### Race and Hispanic Origin (2000)

White	84.7%
Black	1.1%
Am. Indian, Eskimo, or Aleut	1.8%
Asian or Pacific Islander	1.1%
Hispanic	8.3%
Other	3.0%

Source: NSBDC.org/Demographer

### Education School Enrollment

Population 3 years and over enrolled in school	100%
Nursery and preschool	5.1%
Kindergarten	6.3%
Elementary School ( 1-8 )	54.9%
High School ( 9-12 )	24.6%
College or Graduate School	9.0%

Source: Bureau of the Census, Census 2000.

### Educational Attainment

Less than 9th Grade	4.1%
9th to 12th Grade, no diploma	17.4%
High School Graduate (includes equivalency)	40.7%
Some College, no degree	22.1%
Associates Degree	5.8%
Bachelor's Degree	6.8%

### Educational Attainment continued

Graduate or Professional Degree	3.2%
Percent Graduate High School or Higher	78.5
Percent Bachelor's Degree or higher	10%

Source: Bureau of the Census, Census 2000.

### Income ( 1999)

All households	100%
Less than \$10,000	9.4%
10000 - 15000	8.8%
15000 - 25000	16.2%
25000 - 35000	15.8%
35000 - 50000	19.9%
50000 - 75000	16.4%
75000 - 99999	7.7%
100000 - 150000	4.8%
150000 - 200000	0.6%
200000 and more	0.5
Median Household Income:	\$34,860

Source: Bureau of the Census, Census 2000.

### Housing

Occupied Housing Units (estimate 12,500)	100%
Owner Occupied	80.2%
Renter Occupied	19.8%
Year Householder moved into units	
1999 - March 2000	25.5%
1995 - 1998	42.9%
1990 - 1994	19.4%
1989 or before	12.2%

Source: Bureau of the Census, Census 2000.

### Year Structure Built

1999 - March 2000	7.5%
1995 - 1998	30.5%
1990 - 1994	22.3%
1980 - 1989	20.5%
1970 - 1979	13.6%
1969 and before	5.6%

Source: Bureau of the Census, Census 2000.

### Value

Specified Owner Occupied Units	100%
Less than \$50,000	1.0%
50000 - 100000	23.0%
100000 - 150000	44.1%
150000 - 200000	22.9%
200000 - 300000	6.6%
300000 - 500000	2.1%
500000 - 999999	-
1,000,000 or more	0.3%
Median Dollars:	\$130,500

Source: Bureau of the Census, Census 2000.

### Tax Structure

Sales and Use Tax	6.75% (none on grocery items)
Property Tax	Assessment is 35% of full cash value
Nye County	#3.53-3.64 per \$100 assessed value
Personal Income Tax	None
Corporate Income Tax	None
Unitary Tax	None
Inventory Tax	None
Franchise on Income Tax	None

Source: Nevada Department of Taxation  
<http://tax.state.nv.us/>



## GETTING DOWN TO BUSINESS

**B**igger isn't necessarily better when it comes to business, according to *Inc.*'s 2005 list of the best cities for doing business. "The economies of most big cities are idling. The real entrepreneurial hotbeds are now on the periphery—



Photo: Courtesy of Sergio Salgado/CCSN

where low costs make it possible to thrive in a tough global economy," headlines the "Best Places For Doing Business In America 2005" survey. After examining 274 population centers, pro-business Nevada was very well represented in the publication.

Enter now Pahrump, situated just on the outskirts of high-ranked Las Vegas. Emerging rapidly from its glitzy neighbor, the town already has become one of the fastest growing rural unincorporated areas in the

United States and a bedroom community for thousands of residents who commute to Las Vegas for work or play.

Thanks to lower taxes, housing and labor costs along with a very business-friendly environment, Pahrump is well on its way to proving it's where the savvy business action will be next. Even businesses looking at Las Vegas will find Pahrump a considerably lower-cost alternative.

Ask high-tech expert and former Southern Californian Vern Van Winkle who started one of the town's cable television station about all the opportu-



nities in Pahrump. Or, let Pete Gnecco tell you how much the company is saving by moving manufacturing and warehousing operations from Las



Vegas to Pahrump. Their stories are featured on the following pages and are just some of the new companies that are growing the list of more than 2000 local and national businesses already doing business in Pahrump.

To serve the growing needs of the town, stores, including a new Wal Mart Super Center, car dealerships, restaurants and other new businesses now have Pahrump addresses.

Understanding their role in serving the growth are banks including a new branch of Wells Fargo, which joined those of Bank of America, Nevada State Bank and Valley Bank.

"With building costs at a fraction of those in Las Vegas, they keep coming" explains Pahrump Chamber of Commerce Chief Executive Officer, Kari Frilot on the town's changing scenes.



# economic development



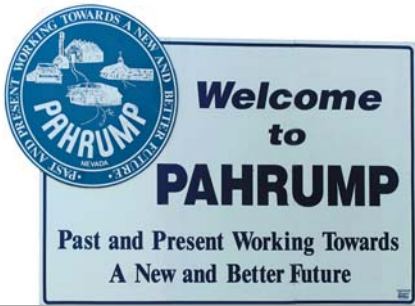
Photo: Courtesy of Sergio Salgado/CCSN

## GREEN ENERGY PROJECTS

A national leader in renewable energy production, Nevada has created incentives for investing in alternative energy potentials. To complement the state's aggressive renewable standard, U.S. Senator and Minority Leader Harry Reid of Nevada is strongly committed to comprehensive energy legislation and permanent tax credits on the national level. With Pahrump's natural assets for "green energy" projects (space, wind and ample sunshine), solar and wind power could yield a new industry capable of providing an export commodity.



*“The business opportunities here are tremendous,” identifies Kari Frilot, chief executive officer of the Pahrump Valley Chamber of Commerce. “In the past year or so, it’s as if floodgates have been thrown open.”*



# business opportunities

## YO HO HO AND A BOTTLE OF RUM

With more than 50,000 cases of spirits now distributed monthly throughout the U.S. and overseas, and forecasts of 100,000 soon, a company needed an efficient and low-cost bottling and warehouse operation on the west coast.

The solution for Data Commodities Ltd., exporter of Cohiba Caribbean Finest Rum to the rest of the world, was to move some of its key operations from Las Vegas to Pahrump three years ago. Recently, it relocated to another Pahrump location to gain even more space.

Currently, the company occupies two side-by-side buildings providing 10,000 square feet and is planning construction of an additional 13,500 square feet on the same site to encompass bottling, warehouse and printing operations.

These new Pahrump facilities will be the ideal location for full bottling operations of the top-ranked rum in a wide selection from dark to white and aged from one to eight years. Additionally, the company,

*“In Pahrump, we have full access to its huge groundwater water aquifer and a location providing easy and inexpensive transport to Las Vegas, Los Angeles and the entire west coast.”*

which also exports and distributes Baronoff Vodka from the Ukraine throughout Arizona, California and Nevada, will have sizeable warehouse facilities in Pahrump. And the company is building a special humidor section to house its cigar product line in the Pahrump location.

“As an importer with bottling operations, we face unique challenges including the need for a top-quality water resource,” explained Pete Gnecco, VP National Sales of Spring Mountain Bottling, Inc., the Pahrump division of Data Commodities. “Then, once in bottles, we have significantly increased the weight of the product resulting in the need for low cost shipping.”

“In Pahrump, we have full access to its huge groundwater water aquifer and a location providing easy and inexpensive transport to Las Vegas, Los Angeles and the entire west coast,” states Gnecco. “Additionally, we were able to secure land and buildings for about half the cost of elsewhere and will pay a utility bill that will cost approximately two-thirds of what we saw elsewhere.”

### City Mileage From Pahrump

Ideally located, Pahrump provides next day freight service to 80 percent of the 11-state western region by local trucking companies. Every western city, a market of more than 50 million people, is within second day delivery time.

Access to State Highway 160 and 372 in Pahrump and Interstate 15 in Las Vegas

Distances from Pahrump to:	Miles
Reno	401
Sacramento	526
Boise	736
Las Vegas	52
Phoenix	339
Los Angeles	260
San Diego	322
Salt Lake City	482
Denver	810

#### Motor Freight Companies.

Local trucking companies provide daily service to 80 percent of the 11-state western region.

#### Rail System.

The nearest Rail Service is located in Clark County (Las Vegas). Freight service is provided by Union Pacific Railroad (800-272-8777). Passenger Service is provided by Amtrak (800-872-7245).





# news & entertainment

## COVERING PAHRUMP HAPPENINGS

Pahrump has what many other towns don't: Two newspapers, three local TV stations and a famous radio celebrity who starts his nationally syndicated talk show program by saying "from the high desert and the great American Southwest."

Published every Wednesday and Friday, Pahrump Valley Times has been bringing home town news to Pahrump since 1970 and is now the county's largest circulation newspaper. The Pahrump Valley Times also is part of the Stephens Media Group which has newspapers in dozens of communities in eight states including the Las Vegas Review Journal. New to town is a second local newspaper, the Pahrump Valley Mirror, which is published weekly.

Pahrump's first TV station, KPVM-TV, Channel 41 offers local news, movies and other programming including High Desert 60 Morning Show, News 41 simulcast live on KNYE 95.1 FM and Eye on Nye.

The jointly owned Channel 30 (KPVT-LP) and Channel 62 (KHMP-LP) offer a variety of family entertainment along with several locally produced programs including Nye County Connection and Nevada Outdoorsman.

As popular as these stations and papers are in town, the owner of local radio station KNYE is known across the country. The nationally syndicated show, Coast To Coast AM is how Art Bell has been long recognized. His local station presents music from the 50's to contemporary during the day and at night, listeners in Pahrump and beyond hear the Coast program which has become an extensive forum for late night radio listeners to voice their views on anything from aliens and UFO's to politics and gun control.



### KPVM-TV, CHANNEL 41

Vernon Van Winkle moved from California with the vision to start a TV station in Pahrump. Now more than eight years later, KPVM-TV, Channel 41 is the CNN and PAX network connection in the town and presents news broadcasts four times a day along with movies, syndicated and local programming.

Each month, Van Winkle also publishes a local Visitor's and TV Guide packed full of town information and current activities with a business directory and advertising. His newest venture is RAVE, a state-of-the-art digital Audio recording studio available for businesses applications, local use and rental.

According to Van Winkle, what he envisioned is almost "99 percent complete." "We gave the community a voice," explains Van Winkle.

In a recent video Van Winkle created about the town, Pahrump is identified as a place to fulfill the American Dream and with his accomplishments, he is proof. You can visit the TV Stations web site at [www.kpvm.tv](http://www.kpvm.tv)

### CHANNEL 30 AND CHANNEL 62

Running TV stations weren't in the plans. Instead her husband's idea was to move to Pahrump so they could take it easy, get away from the snow and enjoy a more rural lifestyle. Keily and Vernon Miller got two of their three wishes plus two local TV stations.

Rather than taking it easy, the Millers first started one TV station in 2004 and a year later, went on the air with their second station in Pahrump. "It was an accident," explained Keily Miller. "We were looking for something to do."

After successful ventures with radio stations, first in California and then again in Reno, the Millers thought they were in for a slower pace in Pahrump. Now they are on the go more than ever with the two stations, Channel 30 and Channel 62.

In addition to local news and shows, the stations are affiliated with FamilyNet, a network that provides award-winning programs for the entire family and America One which provides a rich menu of sports, business and agriculture.

Still not ready to take it easy, Miller is assuming yet another challenge: To bring more Spanish programming to the community. Since mid-2005, three hours a week of Spanish local shows are being broadcast. You can contact the station at [kmiller@khmp.org](mailto:kmiller@khmp.org).





# nevada taxes

## SELECTED TAXES IMPOSED BY WESTERN STATES (%)

	Franchise Tax	Corp. Income	Personal Income	Sales & Use
Arizona	No	6.968	2.87-5.04	6.10-10.10
California	Yes	8.84	1.0-9.30	7.00-8.75
Colorado	No	4.63	4.63	2.90-9.90
Idaho	No	7.6	1.60-7.80	6.0-9.0
<b>Nevada</b>	<b>No</b>	<b>No</b>	<b>No</b>	<b>6.50-7.5</b>
New Mexico	Yes	4.8-7.6	1.6-7.8	5.0-7.25
Oregon	No	6.6	5.0-9.0	No
Utah	Yes	5	2.30-7.0	5.0-10.98

**NO Corporate Income Tax**  
**NO Personal State Income Tax**  
**NO Estate and/or Gift Tax**

**NO Unitary Tax**  
**NO Inventory Tax**  
**NO Inheritance Tax**





# labor costs

## NYE COUNTY MEAN HOURLY WAGES FOR SELECTED OCCUPATIONS

Source: Nevada Workforce Informer, Jobconnect (May 2005)

### Management Occupations

Top Executives	40.32
General and Operations Managers	42.3
Advertising, Marketing, Promotions, Public Relations, and Sales Managers	50.73
Operations Specialties Managers	35.74
Administrative Services Managers	32.29
Financial Managers	35.93
Other Management Occupations	38.67
Construction Managers	35.09
Medical and Health Services Managers	35.68
Managers, All Other	37.1

### BUSINESS AND FINANCIAL OPERATIONS OCCUPATIONS

Business Operations Specialists	26.31
Compliance Officers, Except Agriculture, Construction, Health and Safety, and Transportation	26.07
Employment, Recruitment, and Placement Specialists	23.66
Compensation, Benefits, and Job Analysis Specialists	24.91
Management Analysts	25.16
Financial Specialists	27.25
Accountants and Auditors	26.44

### ARCHITECTURE AND ENGINEERING OCCUPATIONS

Architects, Surveyors, and Cartographers	26.06
Surveyors	25.75
Civil Engineers	31.2
Drafters, Engineering, and Mapping Technicians	17.62
Surveying and Mapping Technicians	12.54
All Other Drafters, Engineering, and Mapping Technicians	19.03

### LIFE, PHYSICAL, AND SOCIAL SCIENCE OCCUPATIONS

Environmental Scientists and Specialists, Including Health	26.45
Social Scientists and Related Workers	23.03
Clinical, Counseling, and School Psychologists	34.64

### COMMUNITY AND SOCIAL SERVICES OCCUPATIONS

Counselors, Social Workers, and Other Community and Social Service Specialists	23.33
--	-------

### ARTS, DESIGN, ENTERTAINMENT, SPORTS, AND MEDIA OCCUPATIONS

Media and Communication Workers	24.11
---------------------------------	-------

### LEGAL OCCUPATIONS

Lawyers, Judges, and Related Workers	36.78
Lawyers	38.98
Judges, Magistrate Judges, and Magistrates	49.07

### HEALTHCARE PRACTITIONERS AND TECHNICAL OCCUPATIONS

Health Diagnosing and Treating Practitioners	34.6
Pharmacists	40.43
Registered Nurses	25.72
Health Technologists and Technicians	16.3
Pharmacy Technicians	13.17
Other Healthcare Practitioners and Technical Occupations	26.05
Occupational Health and Safety Specialists and Technicians	26.06

### HEALTHCARE SUPPORT OCCUPATIONS

Nursing, Psychiatric, and Home Health Aides	15.67
Other Healthcare Support Occupations	16.53

### PROTECTIVE SERVICE OCCUPATIONS

First-Line Supervisors/Managers, Protective Service Workers	28.03
Law Enforcement Workers	20.68
Police and Sheriff's Patrol Officers	22.71

### FOOD PREPARATION AND SERVING-RELATED OCCUPATIONS

Supervisors, Food Preparation and Serving Workers	13.45
First-Line Supervisors/Managers of Food Preparation and Serving Workers	13.32
Cooks and Food Preparation Workers	7.77
Food and Beverage Serving Workers	6.78
Bartenders	7.45
Combined Food Preparation and Serving Workers, Including Fast Food	6.49

### SALES AND RELATED OCCUPATIONS

Supervisors, Sales Workers	12.92
Real Estate Sales Agents	24.89
Retail Salespersons	11.61
Retail Sales Workers	8.46
Cashiers	8.07

### OFFICE AND ADMINISTRATIVE SUPPORT OCCUPATIONS

Supervisors, Office and Administrative Support Workers	21.46
First-Line Supervisors/Managers of Office and Administrative Support Workers	21.46
Financial Clerks	13.24
Bookkeeping, Accounting, and Auditing Clerks	13.93
Information and Record Clerks	17.34
Court, Municipal, and License Clerks	15.68
Customer Service Representatives	12.99
Human Resources Assistants, Except Payroll and Timekeeping	16.94
Receptionists and Information Clerks	9.39
Material Recording, Scheduling, Dispatching, and Distributing Workers	14.91
Shipping, Receiving, and Traffic Clerks	14.62
Stock Clerks and Order Fillers	11.67
Secretaries and Administrative Assistants	16.81
Secretaries, Except Legal, Medical, and Executive	15.57
Office Clerks, General	11.23

### CONSTRUCTION AND EXTRACTION OCCUPATIONS

Supervisors, Construction and Extraction Workers	24.81
First-Line Supervisors/Managers of Construction Trades and Extraction Workers	24.81
Construction Trades Workers	19.69
Construction Laborers	11.1
Operating Engineers and Other Construction Equipment Operators	23.14
Electricians	24.47
Plumbers, Pipefitters, and Steamfitters	19.97
Other Construction and Related Workers	16.99

### TRANSPORTATION AND MATERIAL MOVING OCCUPATIONS

Truck Drivers, Light or Delivery Services	12.95
Taxi Drivers and Chauffeurs	9.81
Other Transportation Workers	15.05
Transportation Workers, All Other	11.92
Material Moving Workers	9.19
Laborers and Freight, Stock, and Material Movers, Hand	7.33



## LARGEST EMPLOYERS IN NYE COUNTY

AREA	INDUSTRY	SIZE CLASS EMPLOYEES	TRADE NAME	CITY
Nye County	Physical/Engineering /Biological Research	1000 to 1499	Bechtel Nevada Corp.	
Nye County	Elementary and secondary schools	800 to 899	Nye County School District	Tonopah
Nye County	Gold Ore Mining	600 to 699	Round Mountain Gold Corp.	Round Mountain
Nye County	Executive and Legislative Offices Combined	500 to 599	Nye County	Tonopah
Nye County	Warehouse Clubs and Super Centers	300 to 399	Wal-Mart Super Center	Pahrump
Nye County	Casino Hotels	200 to 299	Pahrump Nugget Hotel and Gambling Hall	Pahrump
Nye County	Casino (except casino hotels)	200 to 299	Terrible Town	Pahrump
Nye County	Casino Hotels	200 to 299	Saddle West Casino	Pahrump
Nye County	Casino (except casino hotels)	100 to 199	Lakeside Casino	Pahrump
Nye County	Temporary Help Services	100 to 199	Pahrump Labor Services	Pahrump

Source: nevadaworkforce.com

## EMPLOYMENT BY INDUSTRY

	(2001) Percentage change since 1990	(2006) Estimated Percentage change since 1990
Agriculture, Forestry and Fishing	+200%	-400%
Mining	+181	+198
Construction	+209	+254
<b>Manufacturing</b>		
Durables	+210	+250
Non-Durables	+200	+238
<b>Total Manufacturing:</b>	+207	+247
Transportation	+221	+277
Communications and Utilities	+216	+278
Wholesale Trade	+242	+323
Retail Trade	+214	+268
<b>Service</b>		
Business/Repair	+234	+318
Personal	+199	+247
Entertainment/Recreation	+228	+300
Health	+249	+347
Education	+221	+283
Other	+233	+311
<b>Total Service:</b>	+224	+295
Public Administration	+211	+258

Source: Comprehensive Economic Development Strategy (CEDs)





## WORKER'S COMPENSATION

- California's workers' compensation costs are 30 to 60% higher than Nevada's and climbing.
- California's workers' compensation is double the national average
- California's workers' compensation reform promised 20-30 percent savings to companies when in reality businesses have only seen approximately 9-10 percent savings

## UTILITIES

California's utility costs are 28 to 36% higher than Nevada's

## FAMILY MEDICAL LEAVE ACT

California's Family Medical Leave Act gives employees a potential of 7 months compared to Nevada's 3 months.

Source: CEO-CFO Group of Las Vegas.

## JOB TRAINING - MAKING THE RIGHT CONNECTIONS



Recognizing the growth and potential of Pahrump, the first ever comprehensive Nevada JobConnect One-Stop Center office outside the state's more traditional economic centers was opened in 2005. The new center offers the rapidly changing community and surrounding areas a one-stop place for employers and job seekers to connect.

For employers, the Nevada JobConnect One-Stop Center location offers recruiting, retention, training and retraining, and outplacement services as well as valuable information on labor law and labor market statistics. For job seekers, Nevada JobConnect One-Stop Center

office offers career development information, job search resources, and training programs.

The Rural One-Stop Center is committed to partnering with companies to understand the specific job requirements needed. As part of the process of generating qualified job seekers, the center's service providers and partners investigate if added or special training is needed. As needed, the center works to offer eligible job seekers and businesses necessary resources and works to establish new learning courses for apprentice, technical or continued training.

The Rural One-Stop Center center started with a win-win story of success. Almost a dozen, relatively unskilled workers were placed in work experience training to help refurbish the actual location of the new JobConnect One-Stop Center, a former multi-use property. As the result of work experience training and added skills experience, all were then hired by various construction firms in town.

Nye County invested \$3.2 million to purchase the 30-acres of land and the building in the center of town to house the Rural JobConnect Center office and other community-based organizations and agencies. The Center groups more than 10 businesses and job training service providers under one roof, working in tandem for both jobseekers and businesses.





## NEVADA BUSINESS ASSISTANCE PROGRAMS

### Management Assistance Partnership (MAP)



MAP is the industrial outreach program of the University and Community College System of Nevada. Their primary purpose is to work directly with Nevada companies to speed the flow of new technology, information, and workforce development by providing both direct and referral services to client companies. **Call MAP: 1-800-637-4634.**



Photo: Courtesy of M.A.P./Nevada

### Industrial Development Bonds (IDB's)

The Department of Business & Industry issues tax-exempt industrial development bonds to provide low-interest financing of new construction, improvements, rehabilitation, or redevelopment of qualified projects, which include manufacturing facilities and certain other projects organized under Section 501 of the Internal Revenue Service for eligible businesses. The interest rate is negotiated between the sponsor and the lender. The maximum term is 40 years.

### Renewable Energy Abatements

For those companies involved in the production of energy from renewable sources such as wind, solar, and others, there is a package of abatements avail-

able including sales/use tax and property tax. Minimum 10kW production capacity; not for residential.

**Call EDEN: (775) 751-1923.**

### Right To Work State

State law prohibits the establishment of closed shop policies. Current unionization of Nevada manufacturers is less than 4%.

### Nevada Law Favors Incorporation

Why incorporate in Nevada? No corporate income tax, no taxes on corporate shares, no franchise or personal income tax, no I.R.S information sharing agreements, nominal annual fees, stockholders are not Public Record, to name a few.

### Global Trade Program

The Nevada Global Trade and Investment Program conducts trade missions, provides export seminars, counseling services and hosts foreign delegations to Nevada. The program is aimed at both assisting Nevada businesses and beginning or expanding activities in international markets and attracting foreign investments to the state. The state's trade program, located in the Nevada Commission on Economic Development, works with partners such as the International Resource Center and the Southern Nevada International Business Council.

**Call: (775) 687-4325.**

### Community Development Block Grants

The Nevada Revolving Loan Fund program assists Nevada small businesses in obtaining "gap" financing to complete their business expansion project.

Loans may be used for any business expansion need, especially purchases of machinery, equipment, inventory, and working capital. Up to \$100,000 is available to Nevada businesses that cannot secure 100% financing from commercial lenders. The rates and terms are tailored to the particular needs of the business, with rates generally below prime and terms amortized up to 15 years. The program requires the sponsorship of the local government and must meet state program job-creation requirements, including the hiring and training of persons from low-to-moderate-income households.

**Call Rural NV Dev. Corp.: (775) 751-1947.**

### Procurement Outreach Program

The Procurement Outreach Program provides bid information and direct technical assistance to businesses selling goods and services to the federal government.

### Nevada Small Business Development Centers

All business development centers offer advice on operating new or expanding businesses, with assistance in planning and developing their growth potential, as well as building and maintaining professional management skills.

Source: Economic Development, Sierra Pacific Power Company@2003-2005, EDEN, All Rights Reserved.

## NEVADA BUSINESS INCENTIVE PROGRAMS

**NO Corporate Income Tax**

**NO Unitary Tax**

**NO Personal State Income Tax**

**NO Inventory Tax**

**NO Estate and/or Gift Tax**

**NO Franchise Tax**

**NO Inheritance Tax**

### **Train Employees Now (TEN)**

Nevada's customized industrial training program assists new and expanding businesses to train new or potential employees. Training, developed jointly by the company, the contract agency, and the educational institution, ranges from recruitment to the classroom and on-the-job training. Trainee selection is at the discretion of the company. This program provides job assistance to new businesses. The funds allow a company to quickly train workers in the needed specialized skills. Participating businesses contribute 25% of the total training costs. Potential applicants are recruited and screened by the agency. The final selection is the responsibility of the business. **Contact MAP: 1-800-637-4634.**

### **Sales and Use Tax Abatement**

This is available for purchases of capital equipment. The business must be consistent with the Commission on Economic Development's State Plan for industrial development and diversification and: Pay at least the statewide average hourly wage of \$16.49 and offer a basic benefits package.

Counties/cities with a population of more than 100,000/60,000 (respectively) requires a minimum of 75 full-time permanent jobs in Nevada. Counties/cities with a population of less than 100,000/60,000 (respectively) requires a minimum of 15 full-time jobs.

Commit to maintaining the business in Nevada for at least five (5) years.

**Call: (775) 751-7075.**

### **Sales and Use Tax Deferral**

New and expanding businesses can defer sales and use taxes interest free for up to five (5) years on certain capital goods purchased that are consistent with Nevada's plan for industrial development and diversification.

**Call: (775) 751-7075.**

### **Recycling Property Tax Abatement**

Real and personal property tax abatement is available to qualified recycling businesses engaging in the primary trade of preparing, fabricating, manufacturing, or otherwise processing raw material or an intermediate product. At least 50% of the material or product must be recycled on site. Up to 50% of real and personal property tax can be abated for up to ten consecutive years. A five (5) year commitment on behalf of the company is required.

**Call: (775) 751-7075.**

### **Personal Property Tax Abatement**

An abatement of personal property tax is available to businesses with operations consistent to Nevada's State Plan for economic diversification and development. Fifty percent (50%) of personal property tax can be abated for up to ten (10) years. Qualifying criteria include a commitment to doing business in Nevada, minimum job creation, employee health plans, minimum capital investment, and wage requirements.

**Call: (775) 751-7075.**

Source: Economic Development, Sierra Pacific Power Company@2003-2005, EDEN, All Rights Reserved.

### **BUSINESS CONNECTIONS**

**Pahrump Town Office (Licensing)**

(775) 727-5107 ext 4

**Nye County Director Economic Development**

(775) 751-7075

**Economic Development for Esmeralda and Nye County ( EDEN)**

(775) 751-1923

**Small Business Development Center (SBDC) and Rural Nevada Dev. Corp. (RNDC)**

(775) 751-1947

**Pahrump Chamber of Commerce**

(775) 727-5800

**Management Assistance Partnership (MAP)**

1-800-637-4634

**Job Connect**

(775) 537-2323

**Valley Electric Association**

(775) 727-5312

**Nevada Development Authority (NDA)**

(702) 791-0000

**Commission on Economic Development (CED)**

(775) 687-4325

### **PAHRUMP BANKS**

**Bank of America**

750 S. Hwy 160

Pahrump NV 89048

(775) 727-4925

[www.bankofamerica.com](http://www.bankofamerica.com)

**Bank of America - Albertsons**

200 S. Hwy. 160

Pahrump NV 89048

(775) 751-7100

**Flagstar Bank**

2281 Postal Way #9

Pahrump NV 89048

(775) 727-1469

[www.flagstar.com](http://www.flagstar.com)

**Nevada State Bank**

1301 S. Hwy. 160

Pahrump NV 89048

(775) 727-7183

[www.nsbank.com](http://www.nsbank.com)

**Valley Bank**

3250 S. Hwy. 160

Pahrump NV 89048

(775) 751-4400

[www.vbnv.com](http://www.vbnv.com)

**Wells Fargo Bank**

520 S. Hwy 160

Pahrump NV 89048

(775) 751-6035



## COMMUNITY AMENITIES



The town of Pahrump owns and maintains a variety of public parks and recreation facilities. In the center of town is a 34-acre park and site of McCulloch Arena with the town's rodeo grounds, a public swimming pool and community center. The largest park in town, Petrack also features lighted outdoor ball fields, tennis courts, a basket-

ball court, and a permanent concession stand. In addition to picnic and barbeque facilities, a skate park is featured at the town's 20-acre Honeysuckle Sports Complex.



Photo: Courtesy of Denise Fortin/D2-Design

Future park developments are being planned for an 80-acre site and other smaller sized parks throughout the community.

More than 400 acres of land have been set aside for the development of a Fairgrounds with plans for a rodeo arena, exhibit halls and ball fields.

Plans are underway to establish a comprehensive network of pathways and corridors through Pahrump for bicycle, equestrian and pedestrian use. The trails would connect with community facilities, existing paths, key federal lands and even clusters of horse properties.



Photo: Courtesy of Sergio Salgado/CCSN



Photo: Courtesy of Denise Fortin/D2-Design

There are four golf courses in town. Fun activities for children of all ages include the Skate Zone, Pahrump's indoor skating rink with its laser tag room. For motor enthusiasts, there's the Pahrump Speedway with its race car driver school.



## PAHRUMP KEY ANNUAL EVENTS - (Area Code 775)

[www.pahrumpchamber.com](http://www.pahrumpchamber.com)



### **MARCH**

**Chamber of Commerce Golf Gala**  
Mountain Falls Golf Club 727-5800

### **“St. Patrick’s Day”**

United Way - Honeysuckle Park 751-2400

### **APRIL**

**Children’s  
Easter Egg Hunt**

Petrack Park 727-5107



### **Biz Expo**

Pahrump Valley Chamber of Commerce  
727-5800

**Valley Cruiser’s Car Show** 372-5315



### **Baker to Las Vegas Run**

Pahrump Valley  
Chamber of Commerce  
727-5800

**Terrible’s Desert 250** 751-7777

### **Earth Day**

Honeysuckle Park 727-5107

### **MAY**

**ICS Chili Cook Off**  
Saddle West/Pahrump  
Valley Chamber  
of Commerce  
727-5800



### **United Way Cinco De Mayo Celebration**

Petrack Park 751-2400

### **Saddle West Anniversary Celebration**

727-1111

### **JULY**

#### **Freedom Festival**

Petrack Park 727-5107

### **AUGUST**

**United Way  
Hawaiian Luau**  
Honeysuckle Park  
751-2400



### **Live Entertainment at the Pahrump Valley Winery** 727-6900

### **Relay for Life Fund Raiser**

Petrack Park All Day 727-5107

### **SEPTEMBER**

**Wild West Extravaganza and  
Pony Express Trail Ride**  
Saddle West/Pahrump Valley Chamber  
of Commerce 727-5800

### **OCTOBER**

**Fall Festival, Parade, & Rodeo**  
Town of Pahrump 727-5107

### **Grape Stomp**

Pahrump Valley Winery 727-6900



### **Octoberfest-United Way**

Honeysuckle Park 751-2400



Photos: Courtesy of Denise Fortin/D2-Design

### **Art & Sol**

Honeysuckle Park 764-1538



### **NOVEMBER**

#### **Pahrump Social Pow Wow**

Petrack Park  
751-0569

**Missoula  
Children’s Theatre  
Presentation**  
727-6900

**Pahrump Valley Speedway Auto Racing**  
727-7172

### **Pahrump Arts Council Art Shows**

Courthouse and Library Galleries 764-1538

**Pahrump Valley Museum and Historical  
Society, Tue.-Sat. 10a.m.-2p.m.** 751-1970





## PAHRUMP TOWN EVENTS

Depending on the time of year, residents and visitors alike can take part in the town's many events.

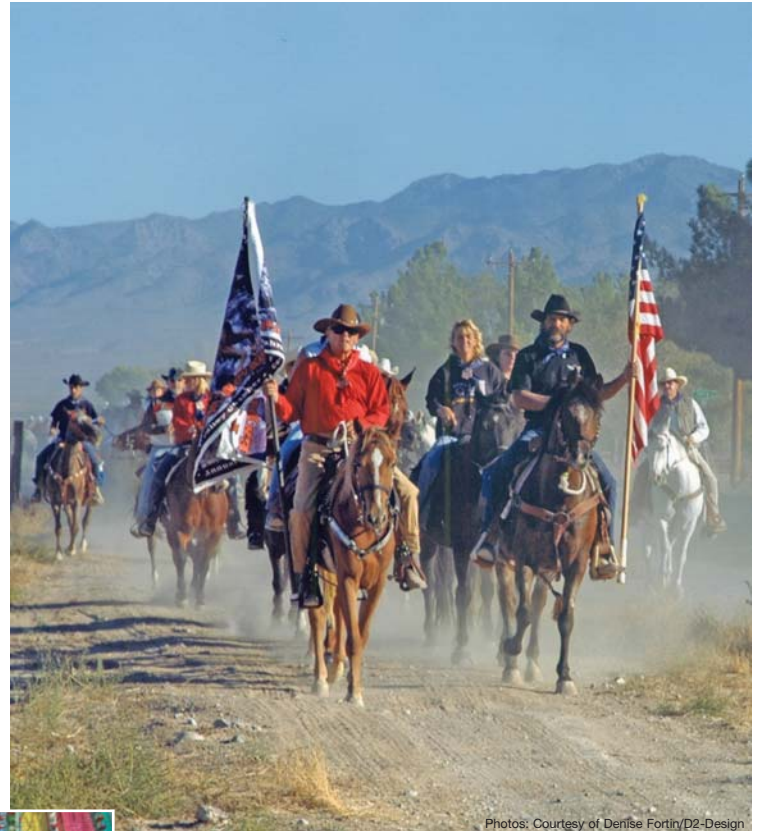


Everyone's invited to dress up in 1800's period western garb for the town's big Wild West Extravaganza with its hoe down, fiddl' contests, Pony Express trail ride and B-B-Q in a replicated Boom Town and Tent City.

During the summer, catch jet ski racing on the 6.5-acre lake at Terrible's Lakeside Resort.

And don't miss the 3-day Pow Wow with tribal dancers in full native attire or the town's Fall Festival with its rodeo and parade

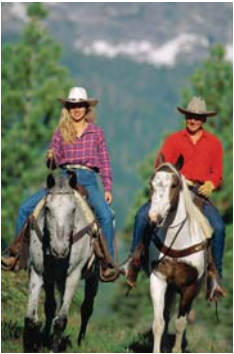
For culture lovers, there's an annual Chautauqua and theatre performances along with an Art & Sol outdoor fine art and craft fair and Fiber Arts Festival.



Photos: Courtesy of Denise Fortin/D2-Design



## THE HUB FOR RECREATION AND ADVENTURE



Pahrump is a spectacular mix of deserts and mountains with a wealth of outdoor recreational activities including biking, camping, exploring, fishing, golfing, hiking, hunting, skiing and swimming.

Pahrump is the eastern gateway to the unique magnificence of Death Valley National Park and yet less than an hour's drive to Las Vegas, one of the world's great destinations for cultural and entertainment opportunities.

Also less than an hour's drive is an exciting and remote area for off-highway vehicle recreation, Dumont Dunes. The tallest of these sandy dunes rises 500' above the Amargosa River.

In nearby Amargosa Valley, the more than 20,000-acres of spring-fed wetlands and desert oasis of Ash Meadows National Wildlife Refuge



provides habitat for at least 24 plants and animals found nowhere else in the world.

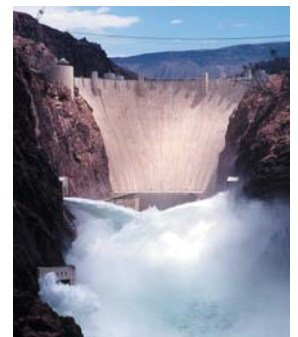
The region's high desert country offers opportunity to sample the "extreme sports experience" and there are ghost towns in close proximity that harken back to the region's "Old West" and mining beginnings. Yet the beaches of Los Angeles and San Diego are just a few hours from Pahrump.



More than thirty-five million visitors from around the world seek out the "Entertainment Capital of the World." Yet for those who live in Pahrump, an hour's drive lands them on the famous Las Vegas Strip with its almost overwhelming number of things to see and do.

Vegas nightlife is alive with celebrity headliners and world famous production shows. Even the famous go to the city's latest nightclubs and bars to see and be seen. No longer just a place for buffets with mountains of choices, renowned chefs offer haute cuisine in the most stylish of venues. Sporting events include championship auto racing, boxing and rodeo along with baseball, basketball, hockey and more.

The world's most celebrated art can be seen in museums inside the casinos. Shopping ranges from designer boutiques to premium outlet malls. Nearby is Lake Mead with all types of water recreation and Hoover Dam, still one of the man-made wonders of the world.



# *Pahrump, Nevada*

