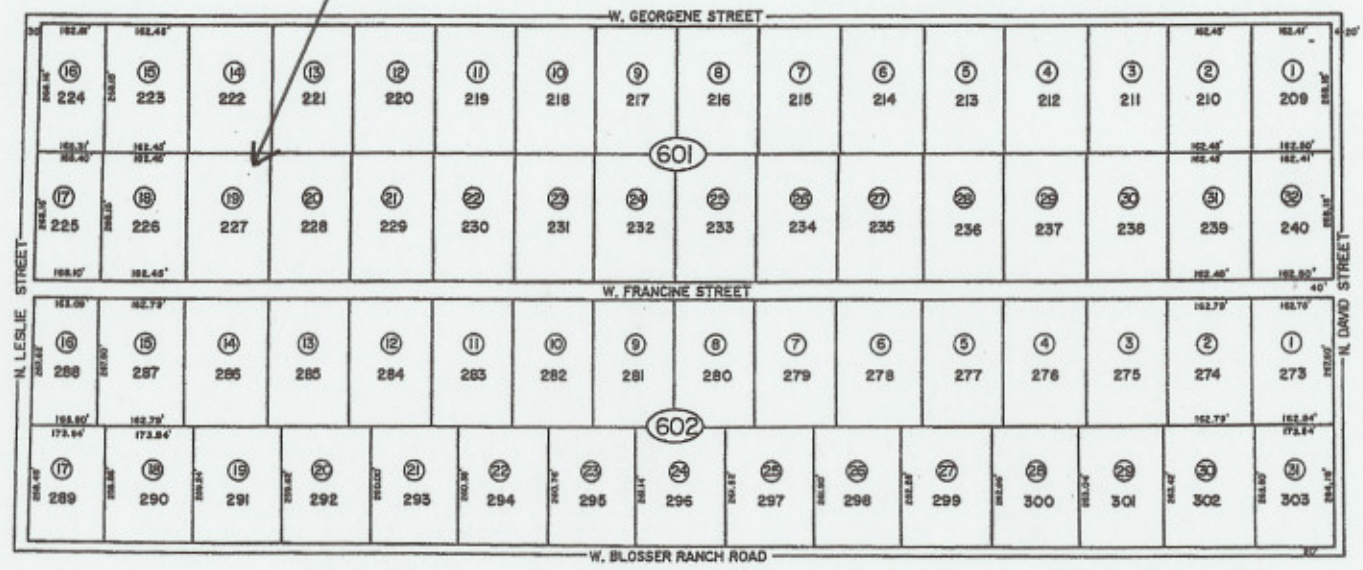


T19S, R53E
POR. SEC 32

41-60
REV. 9/1/95

PROPERTY LOCATION



DEC 89/NMT
NYE CO ASSESSOR

GOLDEN SPRING RANCH UNIT 7

Nye County
NOTE: This plat is for assessment use only and does not represent a survey. No liability is assumed as to the accuracy of the data delineated hereon.