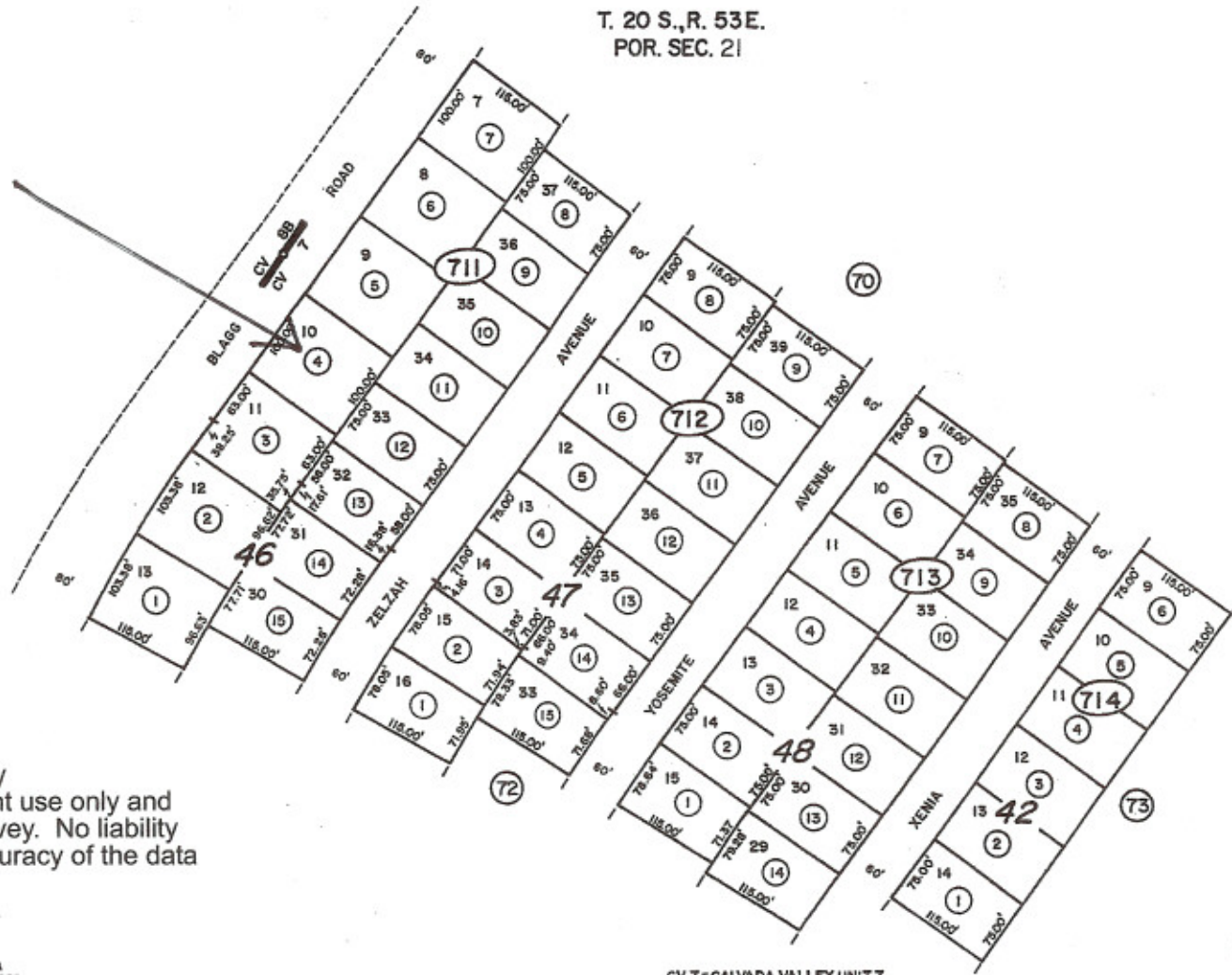


T. 20 S., R. 53 E.
POR. SEC. 21

39-71
Rev. 8-9-95



Nye County
 NOTE: This plat is for assessment use only and does not represent a survey. No liability is assumed as to the accuracy of the data delineated hereon.

AUG 81 / KA
 NYE CO. ASSESSOR

CV 7 = CALVADA VALLEY UNIT 7
 CV 8B = CALVADA VALLEY UNIT 8B

UNIT 7
 CALVADA VALLEY