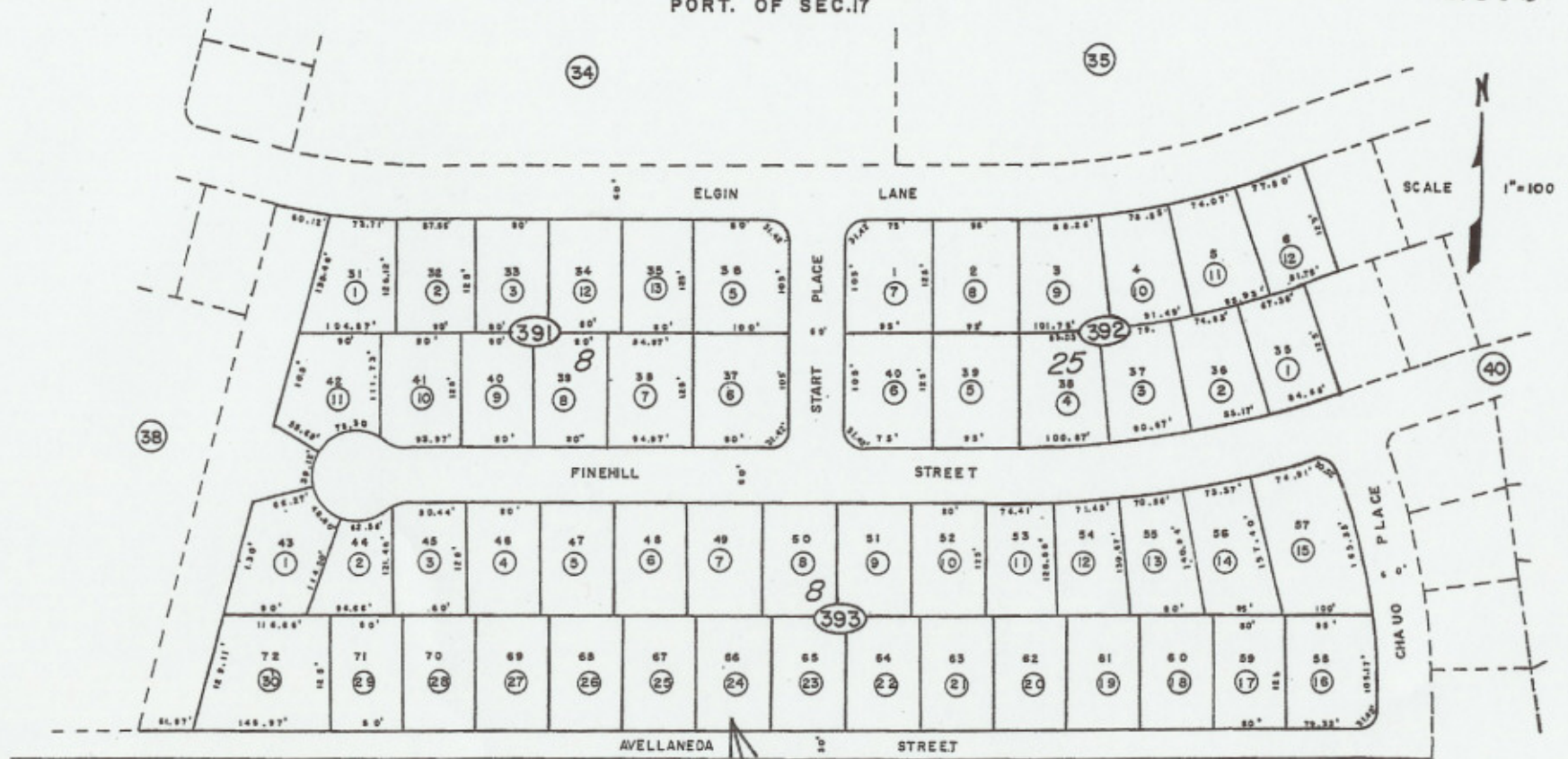


T. 19 S., R. 53 E.  
PORT. OF SEC. 17

31-39  
PLAN 5-5-95



Nye County  
 NOTE: This plat is for assessment use only and does not represent a survey. No liability is assumed as to the accuracy of the data delineated hereon.

DEC-80/VB-JJA  
 NTC CO. ASS'NOR

Bk.  
 32

PROPERTY LOCATION

UNIT 3  
 CALVADA VALLEY NORTH