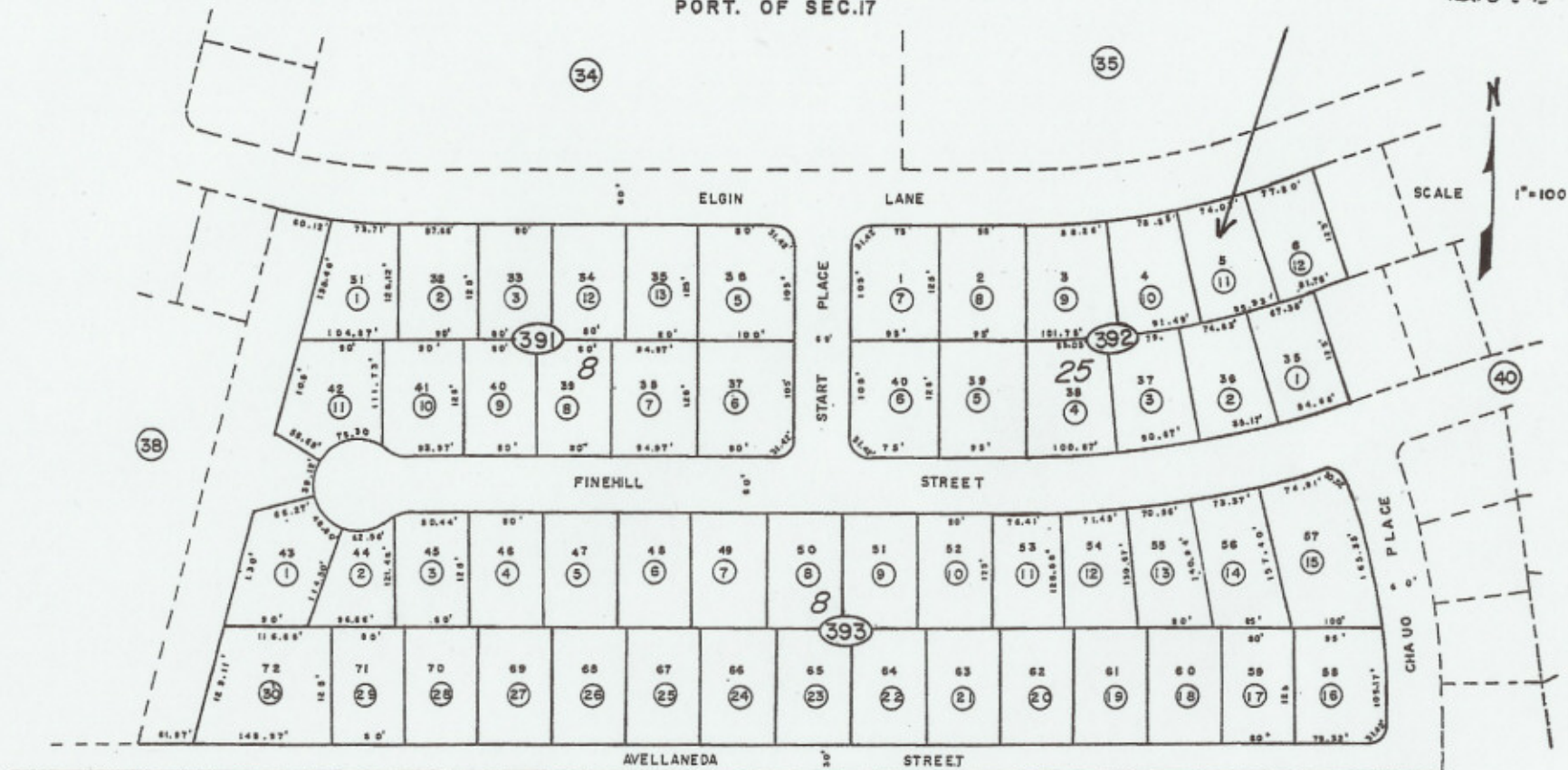


T. 19 S., R. 53 E.
 PORT. OF SEC. 17

31-39
 PLAN 5-8-92



Nye County
 NOTE: This plat is for assessment use only and does not represent a survey. No liability is assumed as to the accuracy of the data delineated herein.

B k.
 32

UNIT 3
 CALVADA VALLEY NORTH

DEC-89/WB-JJA
 NYE CO. ASSessor