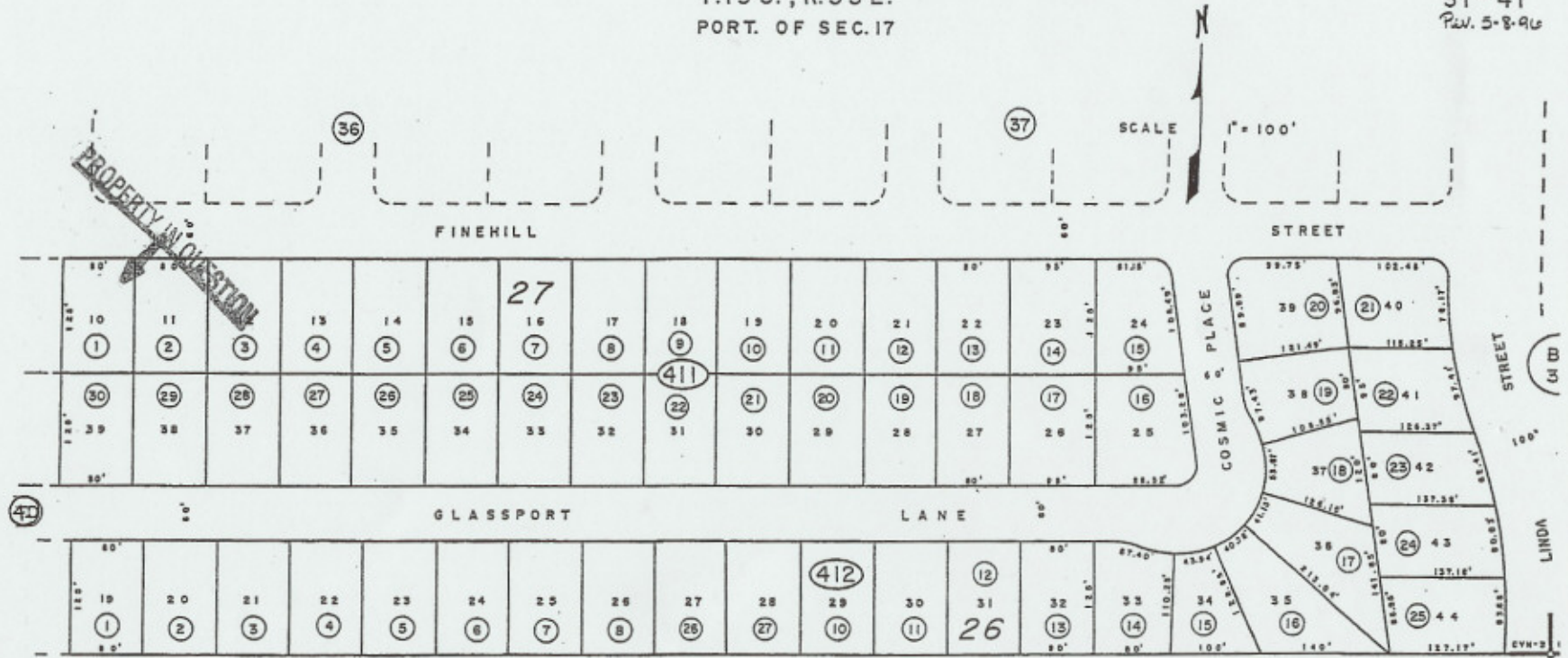


T.19.S., R.53 E.
PORT. OF SEC.17

31-41
Rev. 5-8-96



Bk.
32

CVN-3 = CALVADA VALLEY NORTH, UNIT 3
CVN-1 = CALVADA VALLEY NORTH, UNIT 1

UNIT 3
CALVADA VALLEY NORTH

Nye County

NOTE: This plat is for assessment use only and does not represent a survey. No liability is assumed as to the accuracy of the data delineated hereon.

JAN. '80/WTR-JRW
NYE CO. ASSESSOR